

Faith & Reason Made Simple (Part 2)

(Scientific Evidence That Confirms God Created Us)

Review of Part 1 – The Scientific Flaws of the Theory of Evolution



THE FLAWS OF THE THEORY OF **Evolution**



- 1 – Violates the 2nd Law of Thermodynamics**
- 2 – Violates the Law of Bio-Genesis**
- 3 – Purposely Confuses Micro-Evolution
w/Macro Evolution (New Kind)**
- 4 – The Fossil Record Contradicts Evolution**
- 5 – Mutations Do Not Bring Increased Information**
- 6 – Evolution Contradicts the Order, Design,
Beauty & Information We Observe**

Part 2 – Scientific Evidence That Confirms That God Created All Things

What would we look for in science that would point to a creator? We would look for 2 things! We would look for **design** , because design always points to a designer. We would also look for usable, ordered **information** , because usable, ordered information always points to a source of intelligence.

To help us remember these 8 areas of scientific evidence that confirm that God created all things we need to remember “ **Biggest** to **Smallest** ”. Note how these areas of evidence begin with the biggest thing we know of (The Universe) and end with one of the smallest things we know of (DNA within the nucleus of the living cell).

1. The Universe (Finely Tuned)
2. The Solar System (Finely Tuned and Ordered)
3. The Earth (Created to Be Inhabited)
4. Living Creatures on the Earth (Each with Design Features)
5. The Human Body (Amazingly Designed)
6. The Microscopic World (With Design Features though Very Small)
7. The Human Cell (Incredibly complex & designed)
8. DNA in the Nucleus of the Cell (Vast amounts of usable, ordered information)

Remember, this lesson is not designed to go into great detail but rather to introduce believers to these areas of evidence in a simple way that is easy to understand and remember. You are encouraged to read the book materials that go along with this lesson, and look into the additional resources listed on the resource page that is at the end of this lesson. This is a starting point!

1. The Finely Tuned Universe (At least 30 physical constants (or laws of physics) set perfectly in order for the universe to exist and in order for stars and planets to exist.)

Examples of the physical **constants**, or laws of **physics** that are precisely set are “The Law of Gravity”, “The Speed of Light”, “The Cosmological Constant” and “The Ratio of Electron to Protons.”

Evolutionist acknowledge that this amazing fine tuning is seen within the universe. Their explanation is found in the “Multiverse” theory which states there may have been millions of **universes** produced and this one, out of the millions produced, is by chance, just right.

2. The Solar System (Wonderfully Ordered)

Our solar system is so perfectly ordered that we can know where each of the planets will be in their orbit around the sun, 100 years from now on this date, at this time.

The relationship of our **moon** to the earth also shows evidence of great design.

3. The Earth (Perfectly meets over 75 different parameters needed to support living creatures)

The Bible says in Isaiah 45:18 that God created the Earth not to be a waste place, but to be **inhabited**. Scientists now understand that there are over 75 different parameters that a planet must have in place in order to be inhabited and sustain life. There are very precise parameters that must be met. The earth meets every one of those parameters.

Examples of these are “being the right distance from the sun”, “the right rotation rate”, “the right atmosphere”, “the right amount of liquid water”, “a moon to control the tilt of the earth and the ocean tide”, etc. The earth is perfectly designed with all of these characteristics to allow for life to inhabit the earth!

4. Living Creatures on the Earth (Each are uniquely and wonderfully designed)

- * Australian Brush Turkeys (the male keeps the nest within a degree or two of 91 degrees Fahrenheit for seven weeks by placing and removing sticks, leaves, sand & dirt in particular ways.)
- * Ear Mites (will never infest both ears of a moth)
- * Monarch **Butterflies** (amazing migration abilities)(life span 6-8 weeks for most generation) (the migration generation will live for 8 months)
- * Honey Bees (Engineering geniuses – Honeycomb) (Communication by a **dance**)

(There are multitudes of other examples of living creatures that have amazing abilities and features that are not explained by random evolution, but are examples of evidence that confirms creation!)

5. The Human Body (Amazingly Designed)

- * Development of a human baby in the womb – Think about the miracle of one cell multiplying into trillions of cells in just 9 months and also diversifying into many different types of cells. The whole process is very ordered and miraculous.

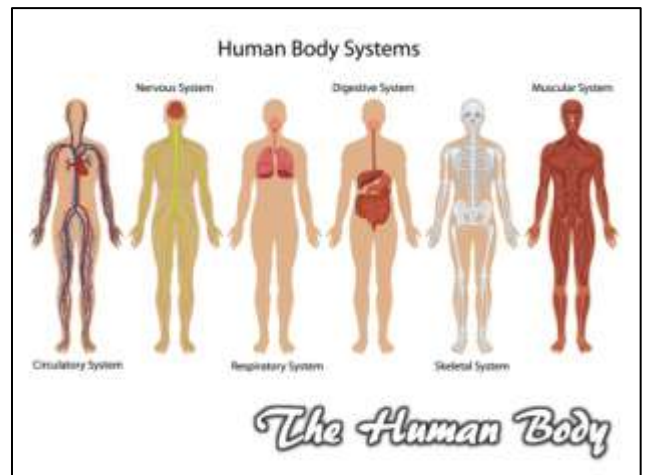
- * **Systems** within the Human Body (Each are intricate, efficient and show design features)

- * Amazing features of the Human Body (These are just a few examples)

- * The Heart – Pumps enough blood in an average lifetime of 70 years to fill a train of tanker cars **25** miles long.

- * Blood vessels –Tied end to end they would stretch out **60,000** miles, which is enough to circle the earth 2 ½ times.

- * Breathing (Alveoli sacs in the lungs – 300-500 million in each lung – They work along with tiny capillaries to transfer oxygen into the blood stream and carbon dioxide out of the blood stream with every breath. They do this extremely efficiently without any thought or effort on our part.)



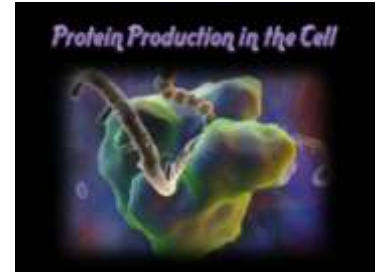
6. The Microscopic World (Design Features in Extremely Tiny Creatures and Structures)

- * The Bacterial Flagellum is like a rotary motor and has **40** different parts that are all necessary for the flagellum to work and that all show evidence of design. Some scientists have pointed to this type of molecular machine with multiple parts that are all critical to the function of the machine as examples of “irreducible complexity”. This means that if you remove any one of the part (reducing the complexity) the machine could no longer work. This shows that it could not have evolved part by part. All the parts had to be there, functioning properly, at the same time for the machine to function and the creature to continue to live.

7. The Human Cell (100 Trillion Cells within the Human Body)

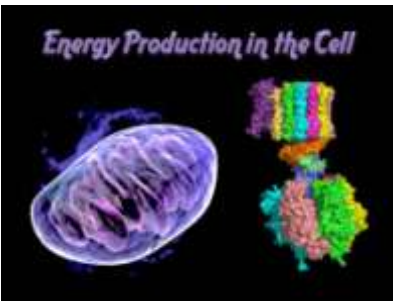
- * Cells are the structures upon which life is built.
- * Each cell is like a miniature **city** with manufacturing plants, power plants, transportation systems, a postal service, quality control systems, security systems, communication systems, etc. (There are billions of parts functioning together for these tiny, living cells to function.)
- * Even though living cells are extremely detailed and complicated, the human body produces billions of new cells every day.

- * Protein Production Within the Cell – On average, each of the 100 trillion cells of your body produces about proteins **2,000** per second. The process of is very complex and it involves the linking of hundreds of amino acids in the right order to produce one protein. The proteins that are produced have to be packaged, labels and carried to the proper location for use. (Think for a while about the amazing process of the production of a protein that is directed by coded information in the



DNA and carried out by

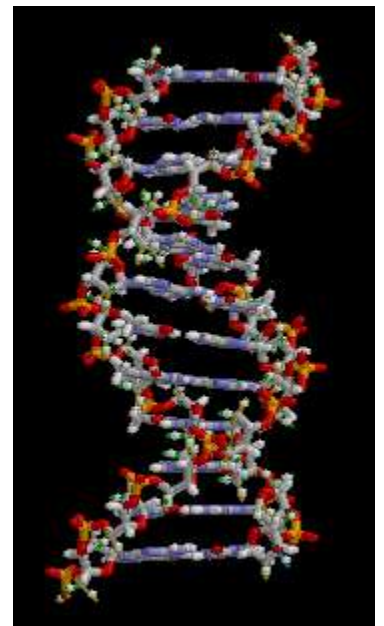
specifically designed molecular machines. Any honest viewing of this leads to the conclusion that an intelligent designer has created these things.)



- * Energy production in the cell – Approximately 10 million ATP molecules, which are like recharged batteries are produce on average in each of your cells per second. This process involves ATP Synthase Rotary Machines which are amazing nanoscale machines. These machines rotate at approximately **1,000** rpms and add a phosphate to ADP molecules to turn them into ATP molecules which are like recharged batteries. The machinery involved in this process has been called one of the wonders of the molecular world.

8. DNA within the Nucleus of the Human (or Living) Cell

- * DNA is an information storage system
- * All the development of life and functions of the human cell are directed by the usable, ordered information found within DNA.
- * It is estimated that there is enough information in a pinhead of DNA to fill a stack of books **500** times higher that from the earth to the moon.
- * DNA clearly shows that all life is directed by coded information and is tremendous evidence that life has been designed by a tremendously wise and powerful person, God!
- * Just as a simple message in the sand like “I love you” clearly indicates that a person with intelligence was present to write the message in the sand, DNA clearly indicates that God was present to give the blueprint information for life to exist and function.



Summary of the 8 areas of Scientific Evidence that Confirms There is a Creator – God!

From Biggest to Smallest

1. The Universe (Finely Tuned)
2. The Solar System (Perfectly Ordered)
3. The Earth (Precisely Tuned to Be Inhabited)
4. Living Creatures (Design Features)
5. The Human Body (Design Features)
6. The Microscopic World (Irreducible Complexity)(Design Features)
7. The Human Cell (Amazing Design & Function)
8. DNA (Usable, Ordered (Coded) Information)

EVIDENCES OF A CREATOR - GOD

Design & Information (From Biggest to Smallest)

EVIDENCES OF A CREATOR - GOD
FINELY TUNED UNIVERSE !

Scientists now know that the universe is held together by precisely set laws of physics (constants) such as "the law of gravity" & "the speed of light". If these constants were set just slightly different, galaxies, stars and planets would not exist! This precision shows great design and confirms the involvement of a designer!

(1)

EVIDENCES OF A CREATOR - GOD
OUR SOLAR SYSTEM !

Our Solar System is so well ordered that we can know exactly where each planet will be within its orbiting cycle around the sun a century from now. Also, each planet is unique in design, rotation, etc. The order of our Solar System points to a designer!

(2)

EVIDENCES OF A CREATOR - GOD
THE EARTH !

There are approximately 75 different characteristics that a planet needs, to be able to sustain life. Examples of these are "being the right distance from the sun", "the right rotation rate", "the right atmosphere", "the right amount of liquid water", "a moon to control the tilt of the earth and the ocean tide", etc. The earth is perfectly designed with all of these characteristics to allow for life to inhabit the earth!

(3)

EVIDENCES OF A CREATOR - GOD
THE EARTH !

Isaiah 45:18 (NASB) For thus says the LORD, who created the heavens (He is the God who formed the earth and made it; He established it and did not create it to be inhabited), "I am the LORD, & there is none else.
2 Practical Examples of God's great design on the Earth!
(1) The Water Cycle
(2) The Balance of Oxygen and Carbon Dioxide in the Atmosphere
(4)

EVIDENCES OF A CREATOR - GOD
LIVING CREATURES !

Living creatures, including insects, marine creatures, birds, mammals, etc. all exhibit amazing instincts and abilities that defy evolution. In many cases their existence is dependant upon their special abilities. Consider the Australian Brush Turkey, Honey Bees, Giraffes, Woodpeckers, Monarch Butterflies, and Beavers as examples.

(5)

EVIDENCES OF A CREATOR - GOD
THE HUMAN BODY (1)

Psalm 139:13-14 tells us that we were formed by God in our mother's womb and we are "fearfully & wonderfully made". Every aspect of the development of a baby in the womb is amazing. Consider the fact that in 9 months 1 cell multiplies into about 100 trillion cells. In addition to multiplying, the cells diversify into blood cells, bone cells, skin cells, etc. The entire process is amazing!

(6)

EVIDENCES OF A CREATOR - GOD
THE HUMAN BODY (2)

The human body shows a multitude of design features that reflect what Psalm 139:13-14 says. Every one of the systems of the body (digestive, respiratory, etc.) function with staggering amounts of precision design. The organs of the body also are each incredible in function. The eyes & ears in particular cannot be explained by mere chance and time, but rather, point to a designer!

(7)

EVIDENCES OF A CREATOR - GOD
MICROSCOPIC WORLD !

The microscopic world reveals tremendous amounts of complex design that points to a designer. E.G. - The tail of a single celled bacteria (called a "flagellum") involves 40 different microscopic parts, each functioning with a specified purpose allowing the flagellum to move the bacteria in various directions. If even 1 of the parts were missing the flagellum could not function. (Irreducible Complexity)

(8)

EVIDENCES OF A CREATOR - GOD
THE HUMAN CELL (1)

The approximately 5 million parts of a Boeing 747 that work together to allow the jet to function show great amounts of undeniable design. The human cell actually has billions of parts that all work together to allow the cell to function, and the human body to live. The cell clearly shows evidence of a designer. The cell has manufacturing plants, power plants, transportation systems, a postal service, quality control systems, security systems, communication systems, etc.

(9)

EVIDENCES OF A CREATOR - GOD
THE HUMAN CELL (2)

The function of human cells clearly points to an intelligent designer! Consider the fact that on average, each of the 100 trillion cells of the human body produces 2,000 proteins per second! (The process of producing even 1 protein is nothing short of remarkable & amazing.) Also, on average, each of the 100 trillion cells of the body produces 10 million ATP energy molecules per second. (The ATP synthase motors producing ATP rotate at apx. 1,000 rpms!)

(10)

EVIDENCES OF A CREATOR - GOD
INFORMATION (DNA) (1)

Information is evidence of intelligence because it takes a source of intelligence to produce usable information. DNA, found in the cells of living creatures, (and living plants) is most densely packed source of information found in the known universe! The amount of information found in 1 gram of DNA is equivalent to the amount of information found in 1 trillion CDs!

(11)

EVIDENCES OF A CREATOR - GOD
INFORMATION (DNA) (2)

An illustration of how information points to a source of intelligence is seen by considering 3 simple words written in the sand: "I love you". Any person who would see these 3 words scratched in the sand would instinctively know that someone with intelligence had been there and had scratched the words in the sand. In the same way, the information in DNA tells us clearly that an intelligent being has placed the information there for a purpose.

(12)

Conclusion – We are called to be ready to give a defense to those who ask about the hope within us!

* We need to strengthen our own faith by knowing the evidence that confirms our faith!

* We need to be ready to help other (especially young people) by knowing the evidence that confirms our Christian Faith!